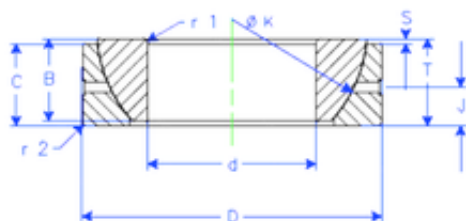




Enduro GE 90 SX plain bearings



Bearing No. GE 90 SX

Size	90x140x32 mm
Bore Diameter	90 mm
Outer Diameter	140 mm
Width	32 mm
d	90 mm
D	140 mm
T	32 mm
B	32 mm
C	28 mm
r1 min.	1,5 mm
r2 min.	1,5 mm
J	16 mm
K	129 mm
S	10,1 mm
Weight	2,090151936 Kg
Basic dynamic load rating (C)	316 kN

GE 90 SX Bearing 2D drawings and 3D CAD models