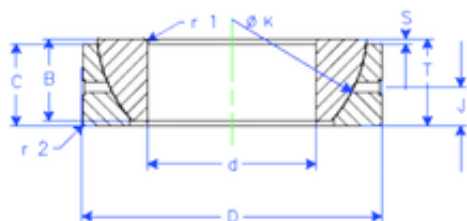




Enduro GE 180 SX plain bearings



Bearing No. GE 180 SX

Size	180x280x64 mm
Bore Diameter	180 mm
Outer Diameter	280 mm
Width	64 mm
d	180 mm
D	280 mm
T	64 mm
B	64 mm
C	61 mm
r1 min.	3 mm
r2 min.	3 mm
J	28 mm
K	260 mm
S	21 mm
Weight	17,39978912 Kg
Basic dynamic load rating (C)	1395 kN

GE 180 SX Bearing 2D drawings and 3D CAD models