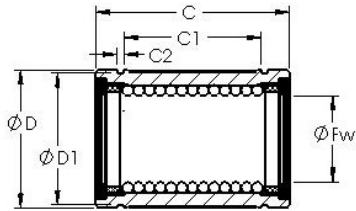


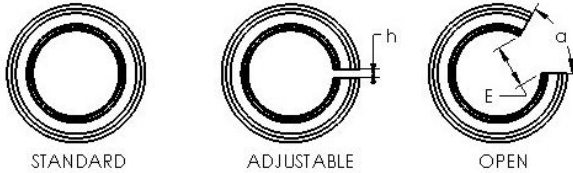


BEARING SCIENCE & TECHNOLOGY CO.,LTD.



AST LBE 12 linear bearings

Bearing No. LBE 12



Bore Diameter	12 mm
Bearing Type	standard type
Dynamic Load Rating (Cr)	284
Static Load Rating (Cor)	575
Shaft Dia. (Fw)	12.000
Outside Dia. (D)	22.000
Length (C)	32.000
Groove-to-groove length (C1)	20.000
Groove Width (C2)	1.300
Groove Dia. (D1)	21.000
Weight (g)	36.50
Material	52100 chrome steel, or equivalent

LBE 12 Bearing 2D drawings and 3D CAD models